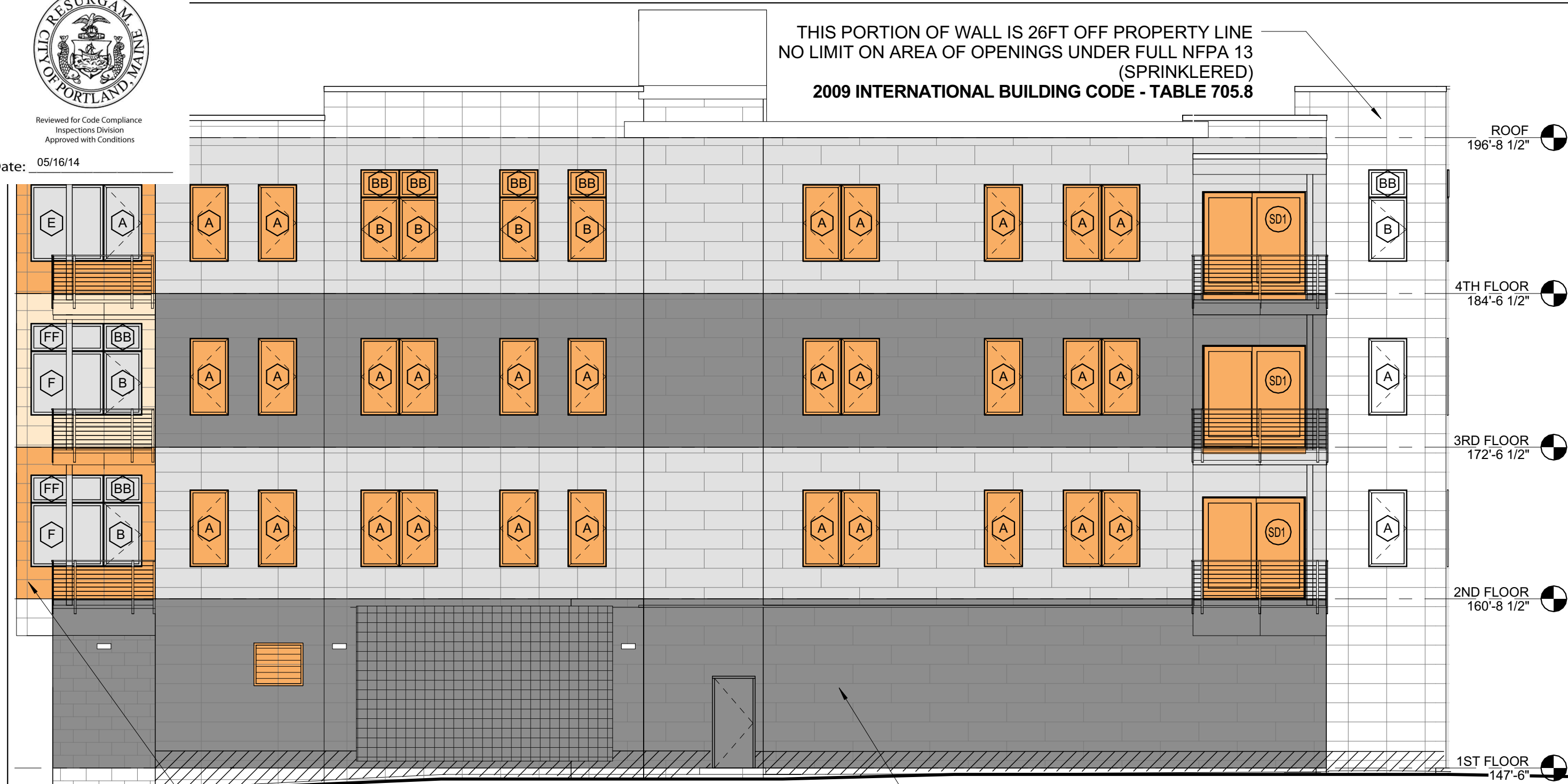




Reviewed for Code Compliance
Inspections Division
Approved with Conditions

Date: 05/16/14



2009 INTERNATIONAL BUILDING CODE - TABLE 705.8

ORANGE SHADED WALL IS 15 FEET OFF THE PROPERTY LINE, PER TABLE 705.8 75% OF WALL AREA CAN BE OPENINGS, PER STORY UNDER FULL NFPA 13 (SPRINKLERED).

PROPOSED ORANGE PORTION OF SOUTH WALL:

2ND FLOOR: WALL = 128 SF	OPENINGS = 62 SF → 48%
3RD FLOOR: WALL = 130 SF	OPENINGS = 62 SF → 48%
4TH FLOOR: WALL = 128 SF	OPENINGS = 52 SF → 41%

2009 INTERNATIONAL BUILDING CODE - TABLE 705.8

GRAY SHADED WALL IS 5 FEET OFF THE PROPERTY LINE, PER TABLE 705.8 25% OF WALL AREA CAN BE OPENINGS, PER STORY UNDER FULL NFPA 13 (SPRINKLERED).

PROPOSED GRAY PORTION OF SOUTH WALL:

1ST FLOOR: WALL = 1,313 SF	OPENINGS = 13 SF → 1%
2ND FLOOR: WALL = 1,082 SF	OPENINGS = 262 SF → 24%
3RD FLOOR: WALL = 1,097 SF	OPENINGS = 262 SF → 24%
4TH FLOOR: WALL = 1,112 SF	OPENINGS = 262 SF → 24%

**MAXIMUM AREA OF EXTERIOR WALL OPENINGS
CALCULATIONS - SOUTH ELEVATION**

ARCHETYPE
architects
48 Union Wharf Portland, Maine 04101
(207) 772-6022 Fax (207) 772-4056

14 MAY 2014
Scale: 1/8" = 1'-0"
SOUTH ELEVATION -
OPENING
CALCULATIONS

Project: 118 ON MUNJOY HILL
118 CONGRESS STREET PORTLAND, MAINE

SK.00-2